

Welcome to



WE HUNT AFRICA



SOUTH AFRICA · BOTSWANA · UGANDA · ZIMBABWE · NAMIBIA · MOZAMBIQUE

OUR TEAM



Anja Müller

Anja was born in Germany but has been at home in South Africa for over 20 years now. Even as a child she went hunting with her father in Germany's domestic territory and now continues this passion with Muller Hunting & Safari in Africa.

Anja is a trained PH and registered Outfitter and operates Muller Hunting & Safari from its base in the Eastern Cape of South Africa.

Being a passionate and experienced hunter herself, Anja guides not only our female hunters to a very special South African experience. Besides that, she takes care of the physical well-being and comfort of our guests and is responsible for the smooth and successful course of your stay.

Get in touch with Anja:

Email: anja@muller-hunting.com
Cellphone Germany: +49 - 151 - 1186 1016
Cellphone South Africa: +27 - 82 - 947 0410



Philip Weyer Henderson

Philip was born and raised on a farm in South Africa and started hunting with his father on the family owned hunting grounds at early age.

He gained hunting & guiding experience with working for one of Africa's greatest hunting Outfitters. He has hunted Dangerous Game in almost all regions of Africa and brings with excellent guiding and tracking skills.

Philip is our Head PH and will guide you with keen intuition and respect for animals and vegetation to an unforgettable hunting experience.

Contact Philip:

Email: philip@muller-hunting.com
Cellphone South Africa: +27 - 76 - 493 6983





Muller Hunting & Safari

We are an experienced Hunting Outfitter, based in the Eastern Cape of South Africa. We have concessions all throughout Africa and we would love to have you join us on an incredible journey of a lifetime.



NGIRI Private Game Reserve *****

Situated at the foot of the Oliphantskop Pass in the Eastern Cape of South Africa. This 5-Star Lodge is phenomenal. NGIRI offers a wide variation of plains game hunts including Sable and Buffalo.

 Sleeps 6 | 4.500 ha





Oyster Bay****

Located on the South African coast, this unique hunting and fishing experience guarantees stunning sightings and views. Bushbuck, Eland, Sable and Buffalo can be hunted on exceptionally beautiful terrain.

 Sleeps 6 | 1.000 ha





Kalahari Oryx Lodge*****

A diamond in the rough. This South African gem stretches over 212.000 acres in the Northern Cape Province, making it the largest privately owned hunting concession in the country. Almost everything can be hunted on these grounds.

 Sleeps many | 86.000 ha





Thophy Quest CH8

Our concession is situated within the Chobe district in North-East Botswana, bordering the Maikaelele Forest Reserve in the West and the Kazuma Forest Reserve in the North. Hunting season is from April to September.



Sleeps: 8 | 120.000 ha

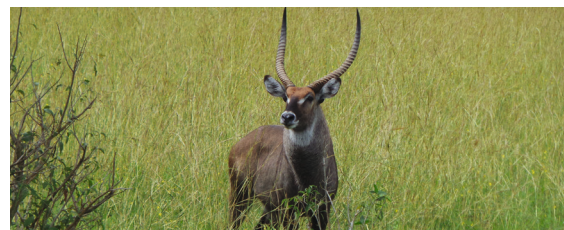


Aswa Lolim Reserve

Home to several migratory species this reserve borders the famous Murchison Falls Park in the North-West of Uganda. The Camp lies right on the Eastern side of the Nile.



Sleeps: 12 | 500.000 ha

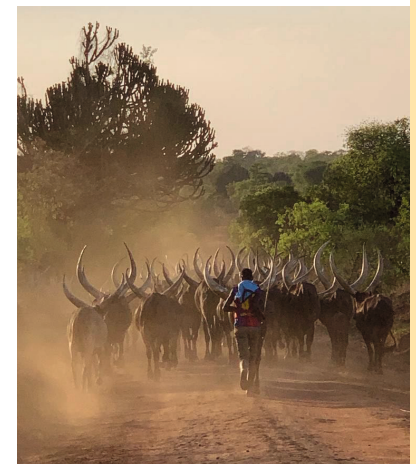
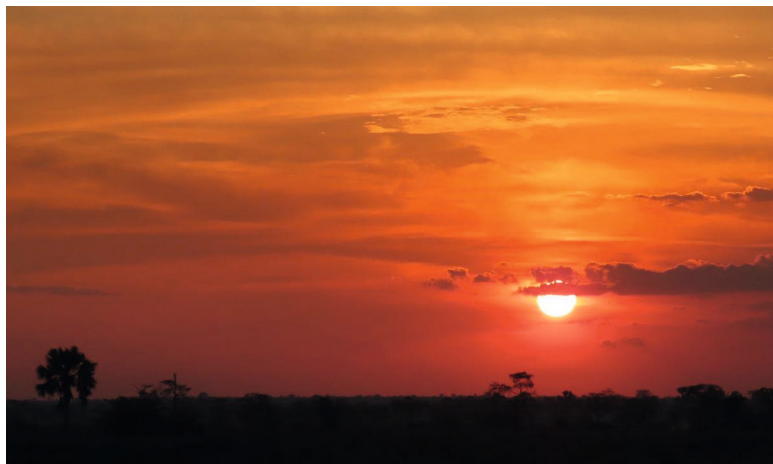




Kafu River Basin

The landscape in Kafu consists mainly of papyrus swamps and dense bush thickets making it a prime hunting for the East African Sitatunga, East African Bush Duiker, East African Bhor Reedbuck, Nile Bushbuck, Ugandan Defassa Waterbuck , Common Oribi and Bush Pig.

 Sleeps 12 | 5.000.000 ha

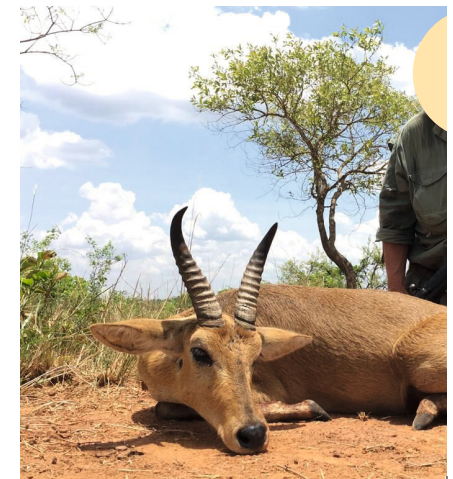
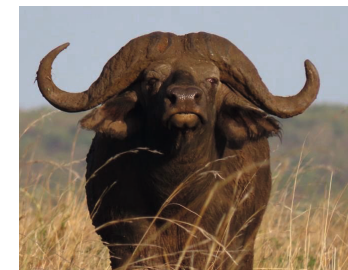




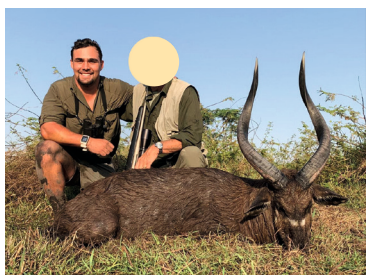
Karamoja North

The Karamoja region is the stomping grounds of the Scottish adventurer and Big Game hunter. Karamoja bell and its still houses many species are found nowhere else in Uganda – including Greater and Lesser Kudu, Brights Gazelle, Cheetah, Elephant and Rothschild's Giraffe.

 **Sleeps 12 | 5.000.000 ha**



Kafu River Trophy




Karamoja North



Tsholotsho South

This huge area has fantastic potential for big tuskers, very well-maintained Lions, Leopard and Buffalo. The lodge consists of 4 newly renovated modern en-suite thatched canvas walled bungalows with all modern amenities such as wifi access. The dining and lounge area overlooks a fire pit from where one can view the waterhole. This area offers one of the best Elephant populations for hunting.

 **Sleeps: 8 | 162.000 ha**





Binga

Our concession is situated in Matebeleland North – just South of the Kariba Lake. It lies along the hot and arid Southern Zambezi Escarpment. Being a water rich area, our Binga concession is known for large hippos, crocodiles and elephants as well as a paradise for birdlife.


 **Sleeps: 8 | vast hunting territory**





Kazuma Hunting Camp

Kazuma lies within the teak forest areas of western Zimbabwe. It is situated along the boundary with Botswana and between the Kazuma reserve, Matetsi Unit 1 and Matetsi Unit 2 reserves. This is predominantly a big game safari area with exceptional elephant, lion, leopard and buffalo trophies being harvested.

 **Sleeps: 10 | 10.000 ha**

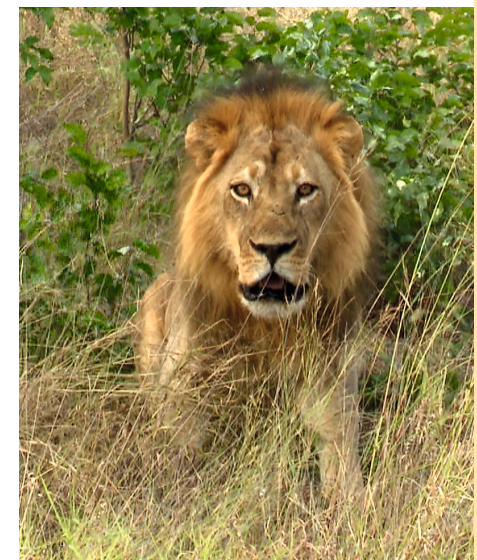




Ngamo Sikumi

The Ngamo and Sikumi hunting area are natural teak forests with plentiful game opportunities. Here you will find Buffalo, Tuskless Elephant and Sable along with other plains game. As it's position borders Hwange National Park, the wildlife has free passage from Hwange through these woodlands.

 **Sleeps: 8 | vast hunting territory**

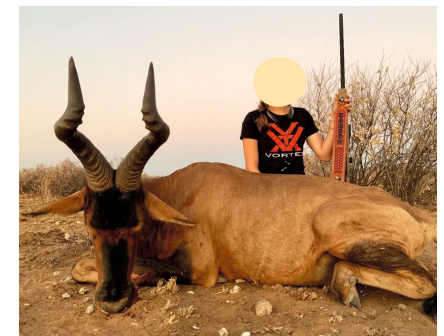
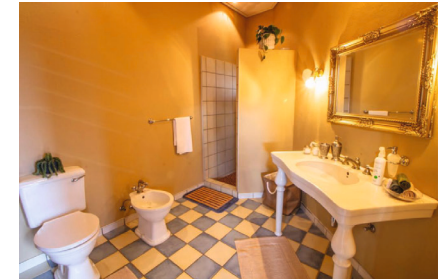




Burg Gesinde*****

Burg Gesinde is a privately owned game farm just North of the capital city, Windhoek. The landscape consists of rocky mountain ranges allowing beautiful vistas over the flatter savanna areas. This game ranch covers approximately 50,000 acres and is home to more than 30 species of game.

 **Sleeps: 8 | 50.000 acres**





Caprivi

The Caprivi is considered to many as Namibia's Garden of Eden. Lush woodland forests, wetlands, rivers and deltas all form part of this unique and beautiful eco system. Elephants, Cape Buffalo, Nile Crocodile and Hippo are spread out in large numbers.

 **Sleeps: 10** | **303.000 acres**



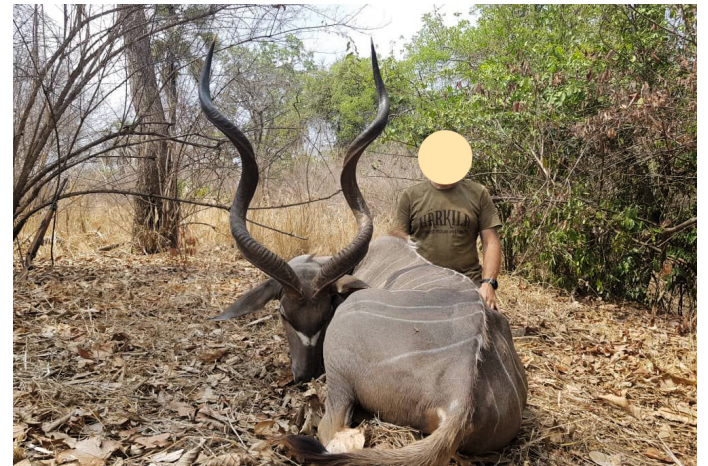
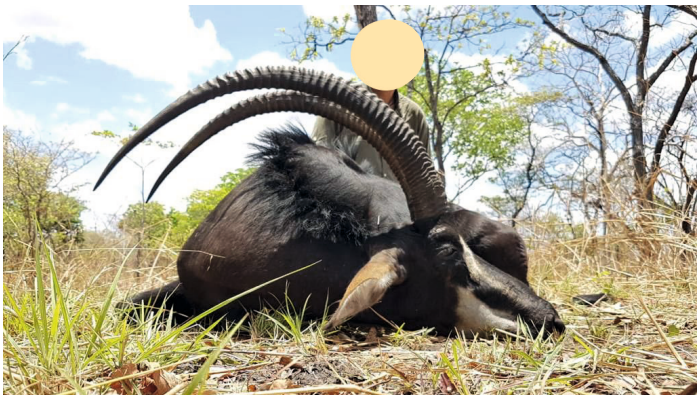
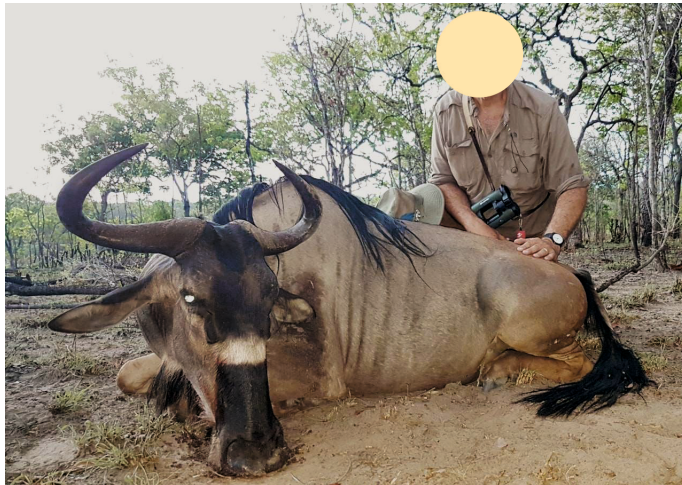


Kambako Camp****

The main camp is superbly located high up on this river's banks. With the most amazing views towards the west, Kambako camp offers luxurious under thatch air-conditioned lodges with en-suite bathrooms, an open-air bar, lounge and dining area, graced with a superb infinity pool for your leisure. This visual symphony, together with the cultural richness of the area and the humble and friendly nature of the local people, will ensure a trip of a lifetime.

 Sleeps: 8 | 700.000 ha





Uganda

- 1 Aswa Lolim Reserve
- 2 Karamoja North
- 3 Kafu River Basin

Mozambique

- 4 Kambako Camp

Zimbabwe

- 5 Binga
- 6 Kazuma Hunting Camp
- 7 Ngamo Sikumi
- 8 Tsholotsho South

Namibia

- 9 Caprivi
- 10 Burg Gesinde

Botswana

- 11 Trophy Quest CH8

South Africa

- 12 Kalahari Oryx Lodge
- 13 NGIRI Private Game Reserve
- 14 Oyster Bay

WE HUNT AFRICA



Muller Hunting & Safari SA PTY Ltd.

6135 Alicedale – South Africa

We have our own registered
air strip on the property

Cellphone Germany: +49-151-11861016

Cellphone South Africa: +27-82-947 0410

info@muller-hunting.com

www.muller-hunting.com